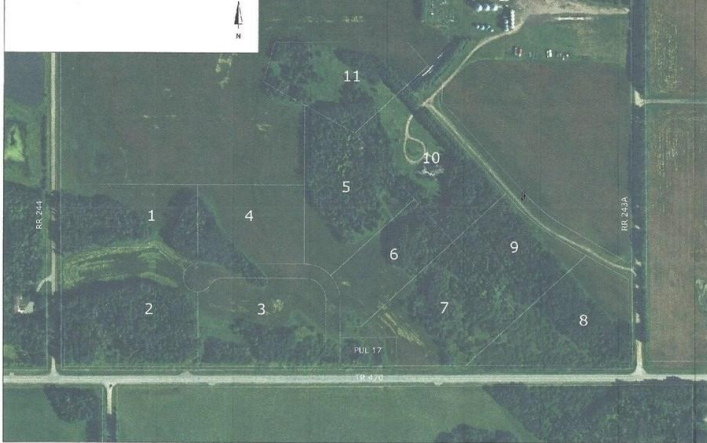


Lot 1, Twp 470 Rge Rd 243A, Rural Wetaskiwin County

\$189,900

County of Wetaskiwin
Proposed Area Structure Plan
Part of SW 4-47-24-4
Map 3
Design on Air Photo
Dimensions are shown on Map 7



MLS®: E4029951

Property Type: Vacant Land

Transaction Type: For sale

Features: See remarks

10 lots available within 5 minutes of Wetaskiwin ranging from 3.2 acres to 7.2 acres. Some have walkouts, mature trees, excellent building sites. Power and gas at property line. Right on pavement for most of the lots. See Plot Plan. Secondary Hwy paved from 2A to QE2 on south side of property. 25 minutes to Leduc and Nisku. (id:5891)

